

Please follow these instructions carefully to determine the correct size for different product styles.

Measurements should always be taken in the following order, and as soon after waking as possible when swelling is minimal.

### CALF STYLE

Open/Closed Toe

1	Measure the ankle circumference at the narrowest part of the ankle, above the ankle bone. Use the appropriate series sizing chart to determine if ankle is SMALL, MEDIUM, LARGE or X-LARGE. <b>Note: This should be your first measurement.</b>
2	Measure the calf circumference at the fullest part of the calf.
3	Determine the calf length by measuring from the floor up to the fibular head. This measurement is taken on the outside of the leg.

### PANTYHOSE AND THIGH-HIGH STYLE

Open/Closed Toe

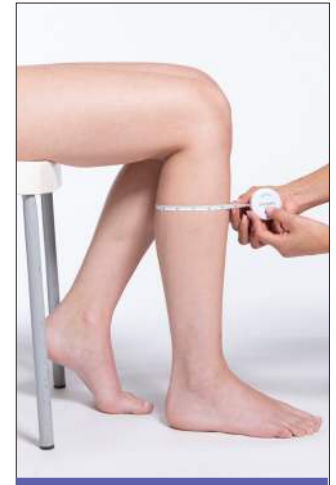
1	Measure the ankle circumference directly above the ankle bone. Use the appropriate series sizing chart to determine if ankle is SMALL, MEDIUM, LARGE, or X-LARGE. <b>Note: This should be your first measurement.</b>
2	Measure the calf circumference at the fullest part of the calf.
3	Skip Step 3 (but refer to General Guidelines #6 below).
4	Measure the thigh at its widest circumference.
5	Determine the leg length by measuring from the floor up to the gluteal fold.
6	Determine the hip circumference by measuring the widest part of the hips.

### GENERAL GUIDELINES

1	Measurements should always be taken as soon after waking as possible, when swelling is minimal.
2	Measure against bare skin, not over clothing.
3	The measuring system is based on having the foot flat against the floor and the calf or leg at a right angle to the foot (see images to the right for examples).
4	Measurements should be taken by pulling the tape around the leg so that it is snug but not constricting.
5	Length measurements should be taken from the ground up.
6	Take all measurements, even if the patient only requires calf-length products, as the patient might decide at a later date to purchase additional styles.



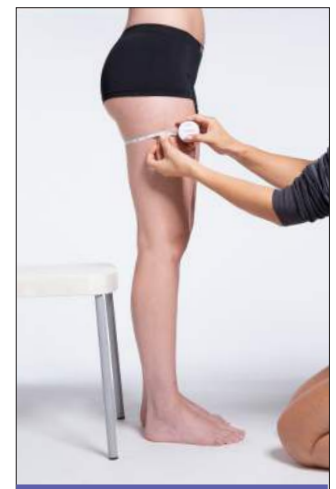
1. Ankle circumference directly above ankle bone



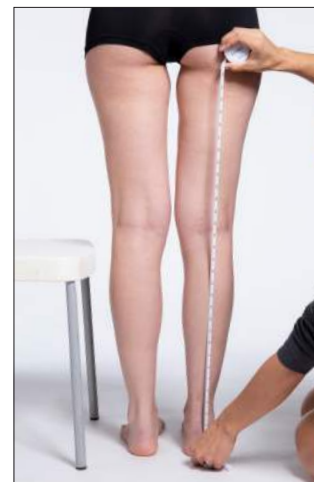
2. Calf circumference at fullest part of the calf



3. Calf length from the floor to the fibular head



4. Widest circumference of the thigh



5. Leg length from the floor up to the gluteal fold



6. Widest circumference of the hip

### How to Order Medical Products

Series Number 23 = Cotton (See individual Catalog pages for series number)	Compression Level 1 = 15–20mmHg 2 = 20–30mmHg* 3 = 30–40mmHg 4 = 40–50mmHg** 5 = 50–60mmHg**	Product Style C = Knee-high or Calf (See individual Catalog pages for available styles)	Size ML = Medium Long (See individual Catalog pages for sizing)	Gender M = Men W = Women O = Open toe	Color 99 = Black (See individual Catalog pages for available colors)
<b>23</b>	<b>2</b>	<b>C</b>	<b>ML</b>	<b>M</b>	<b>99</b>
* 18–23mmHg available in Anti-Embolism stockings only, 18–25mmHg available in Diabetic Compression Socks only					
** 40–50mmHg available in Secure stockings, 40–50mmHg and 50–60mmHg available in Natural Rubber only					
<b>To order Plus Calf with Grip-top or Plus Size Pantyhose:</b> add “/P” after the color in the ordering code (860P for women only)					
<b>To order Calf Style with Grip-top:</b> add “/S” after the color in the ordering code (see product Catalog pages for availability)					
<b>To order Thigh with Waist Attachment:</b> add “/L” to indicate the Left leg or “/R” to indicate the Right leg after the color in the ordering code (860W and 500W only)					
<b>To order Motion High Tech and Motion Thermoregulating Wool:</b> The letter for Gender is not used in the ordering code. <b>Example:</b> 412CSM59 = Motion High Tech, 20–30mmHg, Closed toe Calf, Size Small Medium, Color Red					

### How to Order WELL BEING & CONSUMER HEALTH Products

Series Number 120 = SHEER FASHION (See individual Catalog pages for series number)	Product Style N = High-high (See individual Catalog pages for available styles)	Size A = Small (See individual Catalog pages for sizing)	Color 33 = Natural (See individual Catalog pages for available colors)
<b>120</b>	<b>N</b>	<b>A</b>	<b>33</b>
<b>To order ATHLETIC RECOVERY SOCKS, PERFORMANCE SLEEVES, and MERINO OUTDOOR SOCKS:</b> Size is only one letter and the letter for Gender is not used in the ordering code. <b>Example:</b> 421CL31 = MERINO OUTDOOR SOCKS, 15–20mmHg, Closed toe Calf, Size Large, Color Olive			

**To Order:**  
1.800.322.7744, ext. 1

**Online Dealer Portal:**  
sigvaris-online.com