

# MTG EZ-Advancer® Closed System Intermittent Catheter

en

## Instructions for Use

### INDICATIONS FOR USE

The MTG EZ-Advancer® Closed System Intermittent Catheter is intended to drain urine from the bladder.

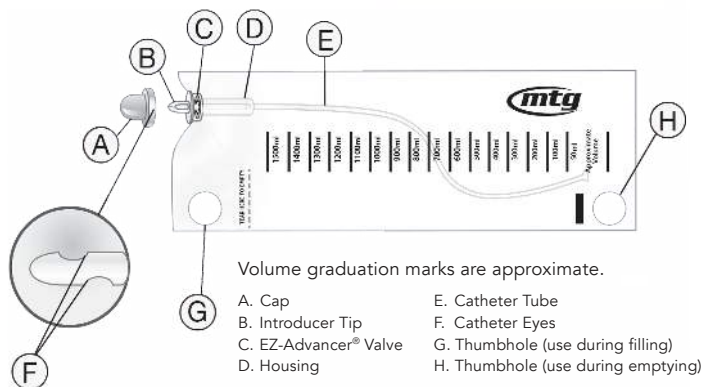
### CONTRAINDICATIONS

None.

### WARNINGS

- When removing the cap, if the introducer tip is also removed, urinary tract infection (UTI) risk could be heightened as the tip is designed to protect the catheter from potential pathogens.
- Any serious incident that occurs in relation to the device should be reported to the manufacturer.

### CATHETER COMPONENTS



### STEP-BY-STEP INSTRUCTIONS

#### MALE INSTRUCTIONS

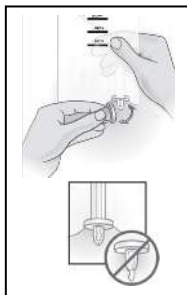
(see reverse for female instructions)

1. Wash hands. Open the package and remove the contents. Put on gloves, and use an underpad, if necessary.



2. Remove outer clothing and underwear to prepare for catheterization.

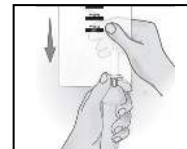
3. Prepare the catheter: Remove the cap from the introducer tip. Ensure that the catheter tube is inside the introducer tip but not extended through the opening of the tip. Set the catheter aside.  
**IMPORTANT:** When removing the cap, gently pry the cap away from the introducer tip. Do not pull the cap in an upward motion to remove it from the introducer tip, as this can cause the introducer tip to be removed from the bag. Ensure the introducer tip is intact after cap removal and still attached to the bag. If you remove the introducer tip during cap removal, discard the entire product and get another. Do not attempt to insert the catheter without the introducer tip attached to the bag. Also, be careful not to touch the introducer tip with your fingers; doing so will compromise sterility.



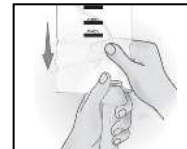
4. Starting at the meatus, gently wipe the glans (head of the penis) in one circular motion. Or, if using swabs, start at the meatal opening and circle the swab tip around the glans. Use the swabs one by one to repeat the same cleansing step for all three swabs.



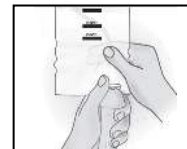
5. In the example shown, the user is right-handed. If the user is left-handed, reverse the procedure. Hold the penis, just below the glans, with the left hand. With the right hand, grasp the catheter tube through the bag, about one inch (1") below the housing.



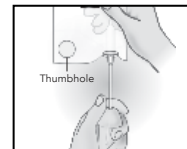
6. Insert the catheter and introducer tip into the meatal opening.



7. Begin advancing the catheter into the urethra at 1" to 1.5" intervals. Continue advancing until the catheter reaches the bladder and urine begins to flow. Continue to hold the bag during drainage through the finger hole. The EZ-Advancer® valve will keep the catheter from retracting back into the bag.



8. When the urine drainage is complete, slowly and gently withdraw the introducer tip and the catheter from the urethra.



9. Use a gauze tissue or toilet paper to cover the eyes (holes) and grasp the catheter tube. Extend the tube out of the bag until it stops. With the non-dominant hand, grasp the housing firmly. Using the other hand, with a firm tug, pull the tube, introducer tip, and the EZ-Advancer valve completely out of the bag, as shown. An alternative method to emptying the bag is to tear the bag open where it says, "TEAR HERE TO EMPTY." Tear downwards for best results.



10. Pour the urine into the toilet or other acceptable waste container. If a sterile sample is needed, pour the urine from the port. Always dispose of the catheter, bag, and contents using normal, acceptable clinical practice. After use, this product may be a potential biohazard. Handle and dispose of in accordance with accepted medical practice and applicable laws and regulations.



11. Wash hands after completion.



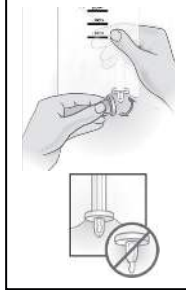
## FEMALE INSTRUCTIONS

1. Wash hands. Open the package and remove the contents. Put on gloves, and use an underpad, if necessary.



2. Remove outer clothing and underwear to prepare for catheterization.

3. Prepare the catheter: Remove the cap from the introducer tip. Ensure that the catheter tube is inside the introducer tip but not extended through the opening of the tip. Set the catheter aside. **IMPORTANT:** When removing the cap, gently pry the cap away from the introducer tip. Do not pull the cap in an upward motion to remove it from the introducer tip, as this can cause the introducer tip to be removed from the bag. Ensure the introducer tip is intact after cap removal and still attached to the bag. If you remove the introducer tip during cap removal, discard the entire product and get another. Do not attempt to insert the catheter without the introducer tip attached to the bag. Also, be careful not to touch the introducer tip with your fingers; doing so will compromise sterility.



4. Using the non-dominant hand, spread the labia using the index and middle finger. In the example shown, the user is right-handed, so the labia is spread using the left hand. Cleanse the meatal opening and surrounding labia. If using a towelette, start at the meatus and swipe downward. If using swabs, start at the meatal opening and swipe downward. Use the swabs one by one to repeat the same cleansing step for all three swabs. After wiping, continue to hold the labia apart.



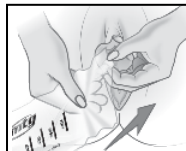
5. Grasp the bag and the catheter an inch (1") below the housing. Insert the catheter and introducer tip into the urethra. Hold the bag as shown to fill properly.



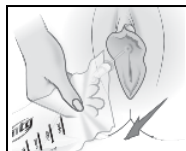
6. Advance the catheter into the urethra with short repetitive motions. Continue advancing until the catheter reaches the bladder and urine begins to flow. The EZ-Advancer® valve will keep the catheter from retracting back into the bag.



7. Continue to hold the bag during drainage.



8. When the urine drainage is complete, slowly and gently withdraw the introducer tip and the catheter from the urethra.



10. Use a gauze tissue or toilet paper to cover the eyes (holes), and grasp the catheter tube. Extend the tube out of the bag until it stops. With the non-dominant hand, grasp the housing firmly. Using the other hand, with a firm tug, pull the tube, introducer tip, and the EZ-Advancer® valve completely out of the bag, as shown. An alternative method to emptying the bag is to tear the bag open where it says, "TEAR HERE TO EMPTY." Tear downwards for best results.



11. Pour the urine into the toilet or other acceptable waste container. If a sterile sample is needed, pour the urine from the port. Always dispose of the catheter, bag, and contents using normal, acceptable clinical practice. After use, this product may be a potential biohazard. Handle and dispose of in accordance with accepted medical practice and applicable laws and regulations.



12. Wash hands after completion.



Symbols glossary and additional information available at [mtgcatheters.com](http://mtgcatheters.com)

Manufactured for:  
 HR Pharmaceuticals, Inc.  
 2600 Eastern Blvd., Suite 201  
 York, PA 17402 USA  
 800-985-9048  
[hrpharma.com](http://hrpharma.com)

MTG EZ-Advancer and EZ-Advancer are registered trademarks of HR Pharmaceuticals, Inc.  
 ©2023 HR Pharmaceuticals, Inc. All rights reserved.

LBL-0074-EN Rev. 0 (09/2023)